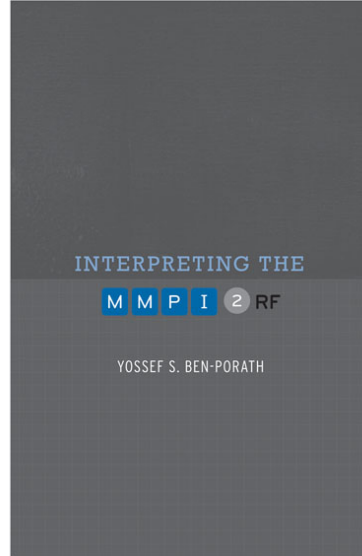


TRAINING SLIDES FOR:

INTERPRETING THE MMPI-2-RF



MMPI-2-RF Training Slides, University of Minnesota Press, 2015. Copyright for all MMPI® and MMPI-2-RF® materials are held by the Regents of the University of Minnesota.

MINNESOTA

INTERPRETING THE **MMPI-2-RF**

CHAPTER 9: MMPI-2-RF CASE STUDIES

MMPI-2-RF Training Slides, University of Minnesota Press, 2015. Copyright for all MMPI® and MMPI-2-RF® materials are held by the Regents of the University of Minnesota.

MINNESOTA

Ms. G: Obsessive-Compulsive Symptoms

- 35 year old, single, woman
- Self-referred for outpatient treatment at a community mental health center
- Recently lost her job owing to obsessive-compulsive behavior
- Preoccupied with worry that her apartment will catch fire or be burglarized
- Engaged to repeated checking behavior of increasing intensity that interfered with job performance (tardiness, productivity)
- After repeated warnings, let go

Ms. G: Obsessive-Compulsive Symptoms

- Raised in an intact family with no reported abuse history
- Had been involved in long-term relationship that ended a few months prior to seeking services
- Had resided with ex-boyfriend most of her adult life
- No prior contact with the mental health system
- At intake, reported feeling anxious, depressed, embarrassed, and guilty over job loss



Minnesota Multiphasic
Personality Inventory-2
Restructured Form®

Score Report

MMPI-2-RF®

Minnesota Multiphasic Personality Inventory-2-Restructured Form®

Yossef S. Ben-Porath, PhD, & Auke Tellegen, PhD

ID Number:	Fig901
Age:	35
Gender:	Female
Marital Status:	Not reported
Years of Education:	Not reported
Date Assessed:	04/22/2011



Copyright © 2008, 2011, 2012 by the Regents of the University of Minnesota. All rights reserved.
Distributed exclusively under license from the University of Minnesota by NCS Pearson, Inc. Portions reproduced from the MMPI-2-RF test booklet. Copyright © 2008 by the Regents of the University of Minnesota. All rights reserved. Portions excerpted from the *MMPI-2-RF Manual for Administration, Scoring, and Interpretation*. Copyright © 2008, 2011 by the Regents of the University of Minnesota. All rights reserved. Used by permission of the University of Minnesota Press.

MMPI-2-RF, the **MMPI-2-RF logo**, and **Minnesota Multiphasic Personality Inventory-2-Restructured Form** are registered trademarks of the University of Minnesota. **Pearson**, the **PSI logo**, and **PsychCorp** are trademarks in the U.S. and/or other countries of Pearson Education, Inc., or its affiliate(s).

TRADE SECRET INFORMATION

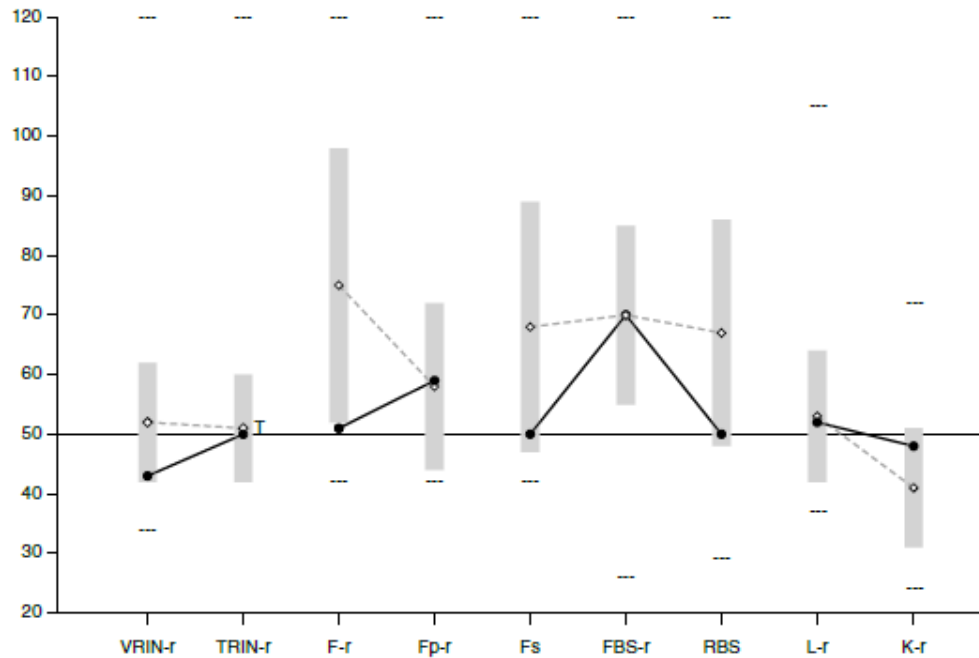
Not for release under HIPAA or other data disclosure laws that exempt trade secrets from disclosure.

[3.0 / 1 / 3.1.13]

ALWAYS LEARNING

PEARSON

MMPI-2-RF Validity Scales



Raw Score:	2	11	2	2	1	14	5	3	7
T Score:	43	50	51	59	50	70	50	52	48
Response %:	100	100	100	100	100	100	100	100	100
Cannot Say (Raw):	0								
						Percent True (of items answered):			47%

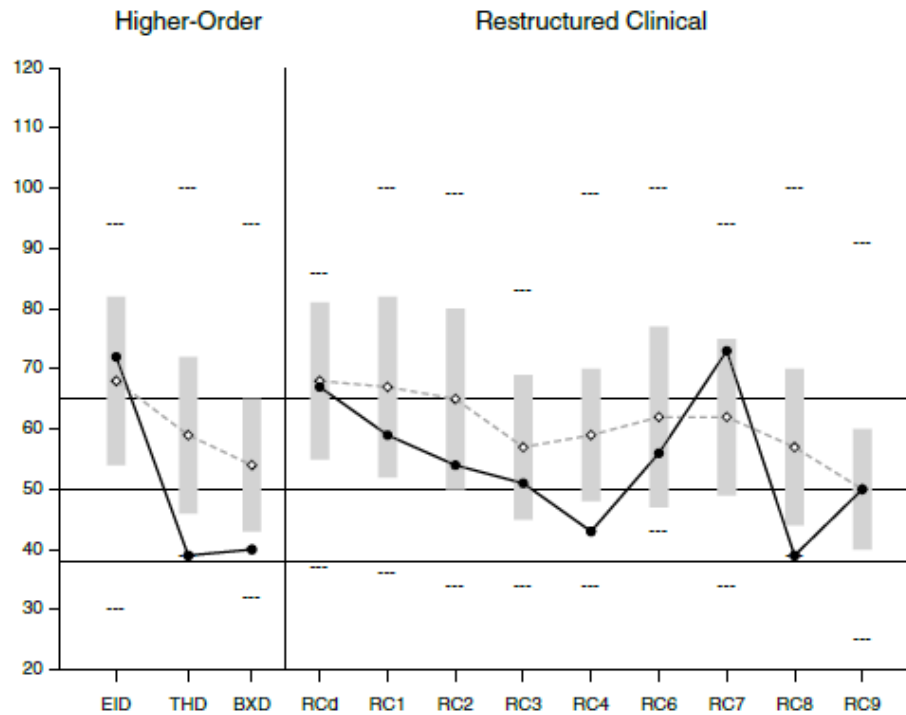
Comparison Group Data: Outpatient, Community Mental Health Center (Women), N = 582

Mean Score (◊---◊):	52	51	75	58	68	70	67	53	41
Standard Dev (±1SD):	10	9	23	14	21	15	19	11	10
Percent scoring at or below test taker:	32	37	21	69	30	56	25	61	84

The highest and lowest T scores possible on each scale are indicated by a "---"; MMPI-2-RF T scores are non-gendered.

VRIN-r	Variable Response Inconsistency	Fs	Infrequent Somatic Responses	L-r	Uncommon Virtues
TRIN-r	True Response Inconsistency	FBS-r	Symptom Validity	K-r	Adjustment Validity
F-r	Infrequent Responses	RBS	Response Bias Scale		
Fp-r	Infrequent Psychopathology Responses				

MMPI-2-RF Higher-Order (H-O) and Restructured Clinical (RC) Scales



Raw Score:	26	0	2	14	6	5	7	2	1	16	0	12
T Score:	72	39	40	67	59	54	51	43	56	73	39	50
Response %:	100	100	100	100	100	100	100	100	100	100	100	100

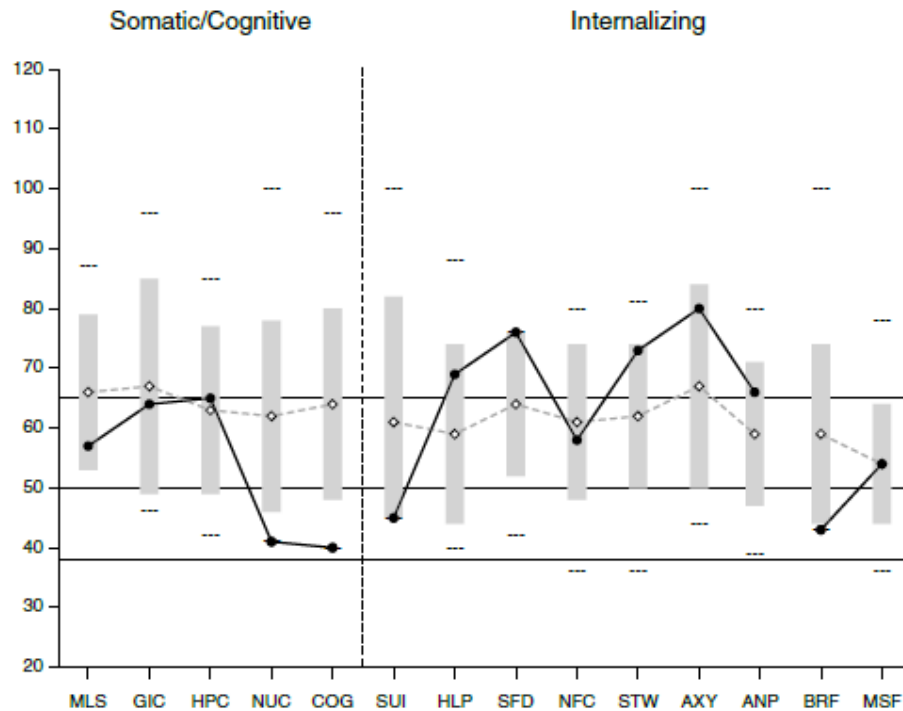
Comparison Group Data: Outpatient, Community Mental Health Center (Women), N = 582

Mean Score (◊---◊):	68	59	54	68	67	65	57	59	62	62	57	50
Standard Dev (±1SD):	14	13	11	13	15	15	12	11	15	13	13	10
Percent scoring at or below test taker:	58	12	13	43	36	31	41	9	43	80	14	62

The highest and lowest T scores possible on each scale are indicated by a "---"; MMPI-2-RF T scores are non-gendered.

EID	Emotional/Internalizing Dysfunction	RCd	Demoralization	RC6	Ideas of Persecution
THD	Thought Dysfunction	RC1	Somatic Complaints	RC7	Dysfunctional Negative Emotions
BXD	Behavioral/Externalizing Dysfunction	RC2	Low Positive Emotions	RC8	Aberrant Experiences
		RC3	Cynicism	RC9	Hypomanic Activation
		RC4	Antisocial Behavior		

MMPI-2-RF Somatic/Cognitive and Internalizing Scales



Raw Score:	3	1	3	0	0	0	3	4	5	6	3	5	0	5
T Score:	57	64	65	41	40	45	69	76	58	73	80	66	43	54
Response %:	100	100	100	100	100	100	100	100	100	100	100	100	100	100

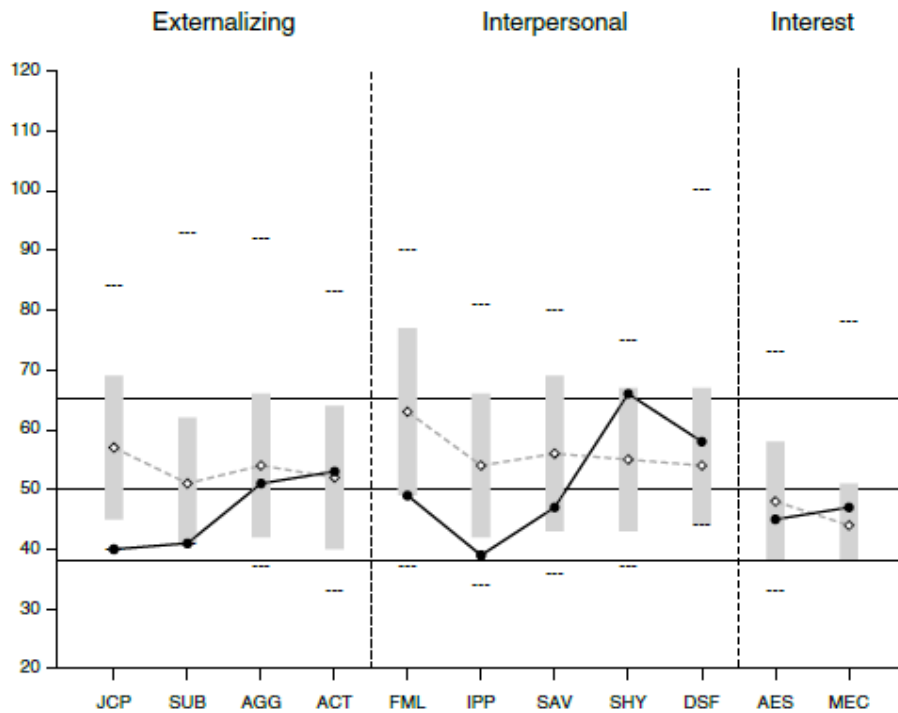
Comparison Group Data: Outpatient, Community Mental Health Center (Women), N = 582

Mean Score (◊---◊):	66	67	63	62	64	61	59	64	61	62	67	59	59	54
Standard Dev (±1SD):	13	18	14	16	16	21	15	12	13	12	17	12	15	10
Percent scoring at or below test taker:	34	53	61	20	14	58	79	100	51	90	84	76	33	63

The highest and lowest T scores possible on each scale are indicated by a "---"; MMPI-2-RF T scores are non-gendered.

MLS	Malaise	SUI	Suicidal/Death Ideation	AXY	Anxiety
GIC	Gastrointestinal Complaints	HLP	Helplessness/Hopelessness	ANP	Anger Proneness
HPC	Head Pain Complaints	SFD	Self-Doubt	BRF	Behavior-Restricting Fears
NUC	Neurological Complaints	NFC	Inefficacy	MSF	Multiple Specific Fears
COG	Cognitive Complaints	STW	Stress/Worry		

MMPI-2-RF Externalizing, Interpersonal, and Interest Scales



Raw Score:	0	0	2	4	2	1	2	6	1	2	2
T Score:	40	41	51	53	49	39	47	66	58	45	47
Response %:	100	100	100	100	100	100	100	100	100	100	100

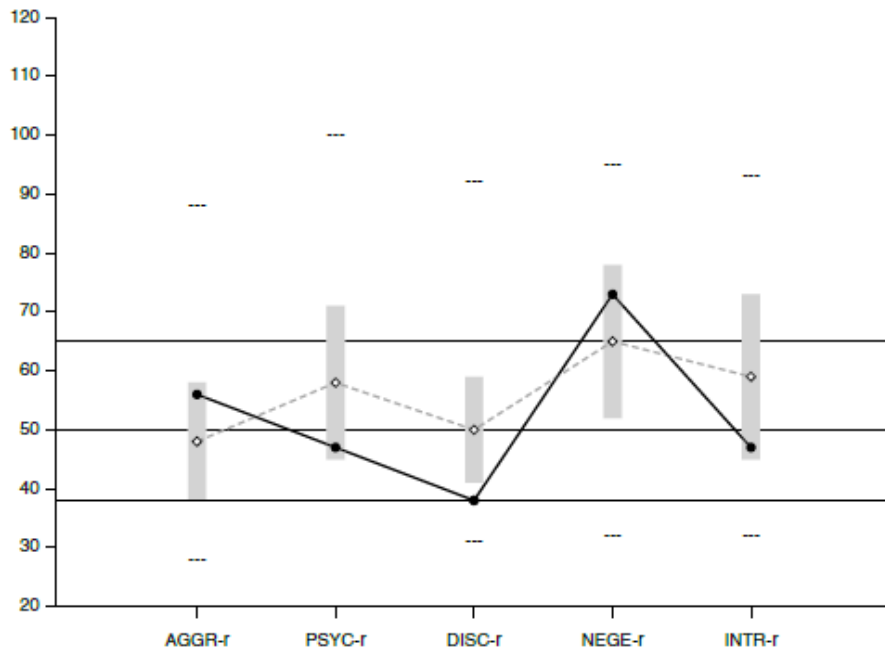
Comparison Group Data: Outpatient, Community Mental Health Center (Women), N = 582

Mean Score (◊---◊):	57	51	54	52	63	54	56	55	54	48	44
Standard Dev (±1SD):	12	11	12	12	14	12	13	12	13	10	7
Percent scoring at or below test taker:	19	39	52	68	23	10	35	85	78	50	81

The highest and lowest T scores possible on each scale are indicated by a "---"; MMPI-2-RF T scores are non-gendered.

JCP	Juvenile Conduct Problems	FML	Family Problems	AES	Aesthetic-Literary Interests
SUB	Substance Abuse	IPP	Interpersonal Passivity	MEC	Mechanical-Physical Interests
AGG	Aggression	SAV	Social Avoidance		
ACT	Activation	SHY	Shyness		
		DSF	Disaffiliativeness		

MMPI-2-RF PSY-5 Scales



Raw Score:	11	1	2	14	5
T Score:	56	47	38	73	47
Response %:	100	100	100	100	100

Comparison Group Data: Outpatient, Community Mental Health Center (Women), N = 582

Mean Score (◊---◊):	48	58	50	65	59
Standard Dev (±1SD):	10	13	9	13	14
Percent scoring at or below test taker:	87	28	15	74	26

The highest and lowest T scores possible on each scale are indicated by a "---"; MMPI-2-RF T scores are non-gendered.

AGGR-r Aggressiveness-Revised
 PSYC-r Psychoticism-Revised
 DISC-r Disconstraint-Revised
 NEGE-r Negative Emotionality/Neuroticism-Revised
 INTR-r Introversion/Low Positive Emotionality-Revised

MMPI-2-RF T SCORES (BY DOMAIN)

PROTOCOL VALIDITY

Content Non-Responsiveness	<u>0</u>	<u>43</u>	<u>50</u>			
	CNS	VRIN-r	TRIN-r			
Over-Reporting	<u>51</u>	<u>59</u>		<u>50</u>	<u>70</u>	<u>50</u>
	F-r	Fp-r		Fs	FBS-r	RBS
Under-Reporting	<u>52</u>	<u>48</u>				
	L-r	K-r				

SUBSTANTIVE SCALES

Somatic/Cognitive Dysfunction		<u>59</u>	<u>57</u>	<u>64</u>	<u>65</u>	<u>41</u>	<u>40</u>
		RC1	MLS	GIC	HPC	NUC	COG
Emotional Dysfunction	<u>72</u>	<u>67</u>	<u>45</u>	<u>69</u>	<u>76</u>	<u>58</u>	
	EID	RCd	SUI	HLP	SFD	NFC	
		<u>54</u>	<u>47</u>				
		RC2	INTR-r				
		<u>73</u>	<u>73</u>	<u>80</u>	<u>66</u>	<u>43</u>	<u>54</u>
		RC7	STW	AXY	ANP	BRF	MSF
							<u>73</u>
							NEGE-r
Thought Dysfunction	<u>39</u>	<u>56</u>					
	THD	RC6					
		<u>39</u>					
		RC8					
		<u>47</u>					
		PSYC-r					
Behavioral Dysfunction	<u>40</u>	<u>43</u>	<u>40</u>	<u>41</u>			
	BXD	RC4	JCP	SUB			
		<u>50</u>	<u>51</u>	<u>53</u>	<u>56</u>	<u>38</u>	
		RC9	AGG	ACT	AGGR-r	DISC-r	
Interpersonal Functioning		<u>49</u>	<u>51</u>	<u>39</u>	<u>47</u>	<u>66</u>	<u>58</u>
		FML	RC3	IPP	SAV	SHY	DSF
Interests		<u>45</u>	<u>47</u>				
		AES	MEC				

Note. This information is provided to facilitate interpretation following the recommended structure for MMPI-2-RF interpretation in Chapter 5 of the *MMPI-2-RF Manual for Administration, Scoring, and Interpretation*, which provides details in the text and an outline in Table 5-1.

ITEM-LEVEL INFORMATION

Unscorable Responses

The test taker produced scorable responses to all the MMPI-2-RF items.

Critical Responses

Seven MMPI-2-RF scales--Suicidal/Death Ideation (SUI), Helplessness/Hopelessness (HLP), Anxiety (AXY), Ideas of Persecution (RC6), Aberrant Experiences (RC8), Substance Abuse (SUB), and Aggression (AGG)--have been designated by the test authors as having critical item content that may require immediate attention and follow-up. Items answered by the individual in the keyed direction (True or False) on a critical scale are listed below if her T score on that scale is 65 or higher. The percentage of the MMPI-2-RF normative sample (NS) and of the Outpatient, Community Mental Health Center (Women) comparison group (CG) that answered each item in the keyed direction are provided in parentheses following the item content.

Helplessness/Hopelessness (HLP, T Score = 69)

135.
282.
336.



Special Note:
The content of the test items
is included in the actual reports.
To protect the integrity of the test,
the item content does not appear
in this sample report.

Anxiety (AXY, T Score = 80)

228.
275.

289.

End of Report

This and previous pages of this report contain trade secrets and are not to be released in response to requests under HIPAA (or any other data disclosure law that exempts trade secret information from release). Further, release in response to litigation discovery demands should be made only in accordance with your profession's ethical guidelines and under an appropriate protective order.

Mr. P: Chronic and Severe Disorder

- 49 year old, single, male
- Assessed at intake to an inpatient psychiatric unit of a community hospital
- Long standing diagnosis of Schizophrenia, Paranoid Type
- Diagnosed during later teens and resided with parents most of his adult life
- Father passed away when Mr. P was in his late 20s
- Continues to reside with mother, now in her late 70s
- Receives case management services in the community

Mr. P: Chronic and Severe Disorder

- Periodically employed as an unskilled laborer under the auspices of local community mental health agency
- Several weeks prior to hospitalization, became embroiled in conflict with co-worker
- Employment suspended following physical altercation
- Because upset and discontinued medication
- Mother reported fairly rapid deterioration, marked by preoccupation with government conspiracy to deprive him of disability benefits
- Threatened retaliation against supervisor and co-worker



Minnesota Multiphasic
Personality Inventory-2
Restructured Form®

Score Report

MMPI-2-RF®

Minnesota Multiphasic Personality Inventory-2-Restructured Form®

Yossef S. Ben-Porath, PhD, & Auke Tellegen, PhD

ID Number:	Fig902
Age:	49
Gender:	Male
Marital Status:	Never Married
Years of Education:	11
Date Assessed:	04/22/2011



Copyright © 2008, 2011, 2012 by the Regents of the University of Minnesota. All rights reserved. Distributed exclusively under license from the University of Minnesota by NCS Pearson, Inc. Portions reproduced from the MMPI-2-RF test booklet. Copyright © 2008 by the Regents of the University of Minnesota. All rights reserved. Portions excerpted from the *MMPI-2-RF Manual for Administration, Scoring, and Interpretation*. Copyright © 2008, 2011 by the Regents of the University of Minnesota. All rights reserved. Used by permission of the University of Minnesota Press.

MMPI-2-RF, the **MMPI-2-RF logo**, and **Minnesota Multiphasic Personality Inventory-2-Restructured Form** are registered trademarks of the University of Minnesota. **Pearson**, the **PSI logo**, and **PsychCorp** are trademarks in the U.S. and/or other countries of Pearson Education, Inc., or its affiliate(s).

TRADE SECRET INFORMATION

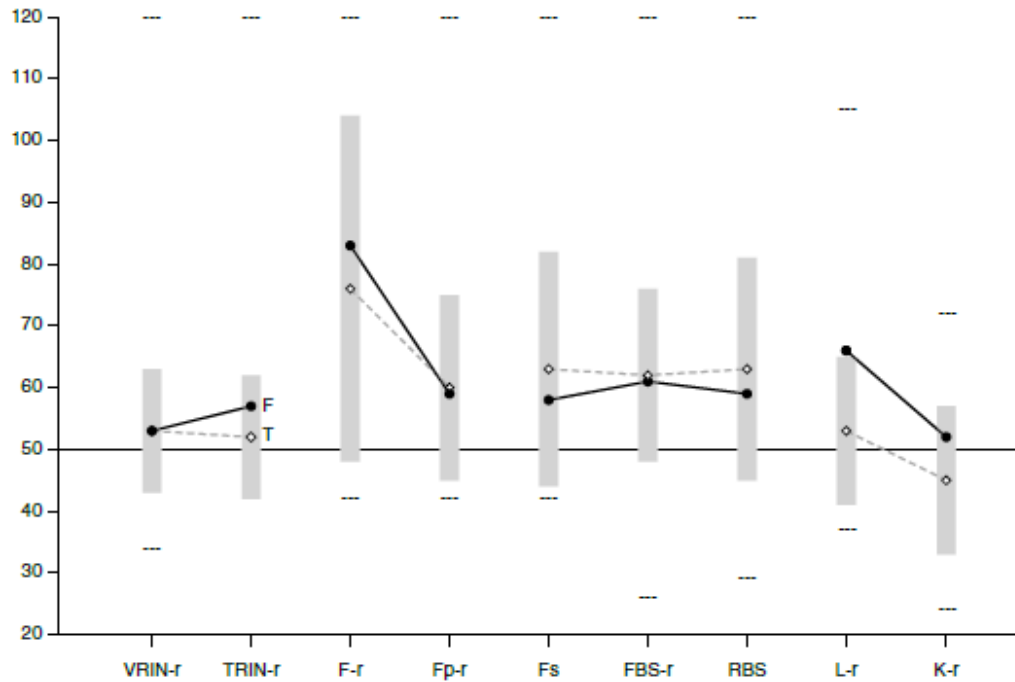
Not for release under HIPAA or other data disclosure laws that exempt trade secrets from disclosure.

[3.0 / 1 / 3.1.13]

ALWAYS LEARNING

PEARSON

MMPI-2-RF Validity Scales



Raw Score:	4	10	9	2	2	11	7	6	8
T Score:	53	57 F	83	59	58	61	59	66	52
Response %:	100	100	100	100	100	100	100	100	100
Cannot Say (Raw):	2								Percent True (of items answered): 42%

Comparison Group Data: Psychiatric Inpatient, Community Hospital (Men), N = 659

Mean Score (◊---◊):	53	52 T	76	60	63	62	63	53	45
Standard Dev (±1 SD):	10	10	28	15	19	14	18	12	12
Percent scoring at or below test taker:	63	76	67	64	58	55	51	88	75

The highest and lowest T scores possible on each scale are indicated by a "---"; MMPI-2-RF T scores are non-gendered.

VRIN-r	Variable Response Inconsistency	Fs	Infrequent Somatic Responses	L-r	Uncommon Virtues
TRIN-r	True Response Inconsistency	FBS-r	Symptom Validity	K-r	Adjustment Validity
F-r	Infrequent Responses	RBS	Response Bias Scale		
Fp-r	Infrequent Psychopathology Responses				

MMPI-2-RF Higher-Order (H-O) and Restructured Clinical (RC) Scales



	EID	THD	BXD	RCd	RC1	RC2	RC3	RC4	RC6	RC7	RC8	RC9
Raw Score:	11	8	8	7	10	4	11	5	6	8	7	14
T Score:	52	74	55	55	68	50	65	52	80	53	70	53
Response %:	98	100	100	96	100	100	100	100	100	100	100	100

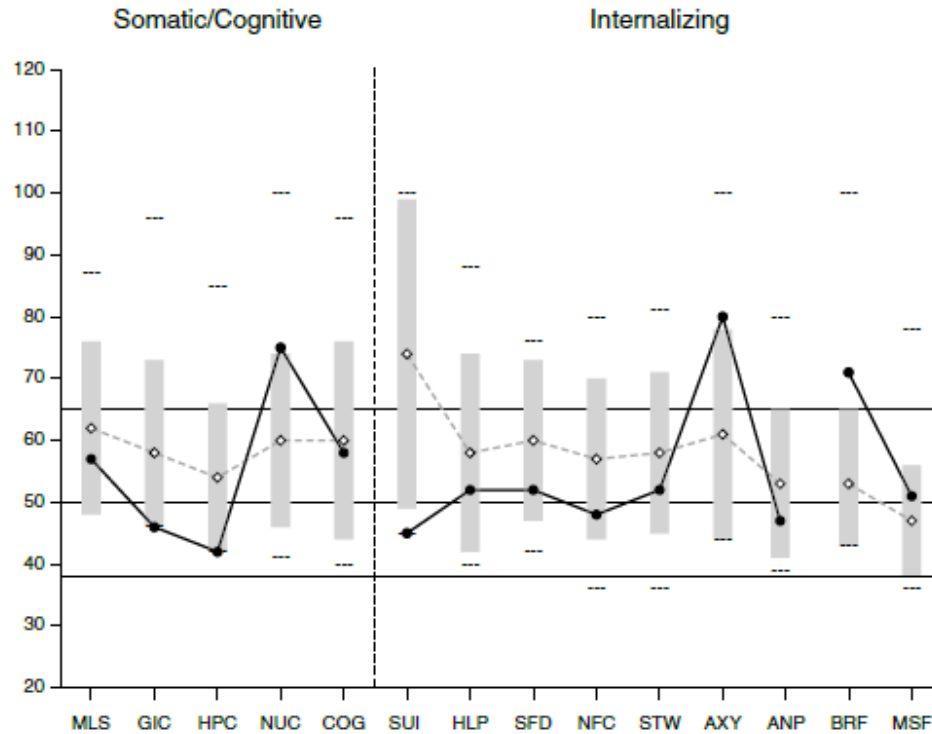
Comparison Group Data: Psychiatric Inpatient, Community Hospital (Men), N = 659

	EID	THD	BXD	RCd	RC1	RC2	RC3	RC4	RC6	RC7	RC8	RC9
Mean Score (◊---◊):	63	59	60	64	58	63	52	64	63	56	58	52
Standard Dev (±1 SD):	16	17	12	15	14	17	12	13	17	14	15	12
Percent scoring at or below test taker:	32	84	40	35	78	32	87	22	85	50	82	64

The highest and lowest T scores possible on each scale are indicated by a "----"; MMPI-2-RF T scores are non-gendered.

EID	Emotional/Internalizing Dysfunction	RCd	Demoralization	RC6	Ideas of Persecution
THD	Thought Dysfunction	RC1	Somatic Complaints	RC7	Dysfunctional Negative Emotions
BXD	Behavioral/Externalizing Dysfunction	RC2	Low Positive Emotions	RC8	Aberrant Experiences
		RC3	Cynicism	RC9	Hypomanic Activation
		RC4	Antisocial Behavior		

MMPI-2-RF Somatic/Cognitive and Internalizing Scales



Raw Score:	3	0	0	5	3	0	1	1	2	3	3	1	3	4
T Score:	57	46	42	75	58	45	52	52	48	52	80	47	71	51
Response %:	100	100	100	100	100	100	100	100	100	100	100	100	100	89

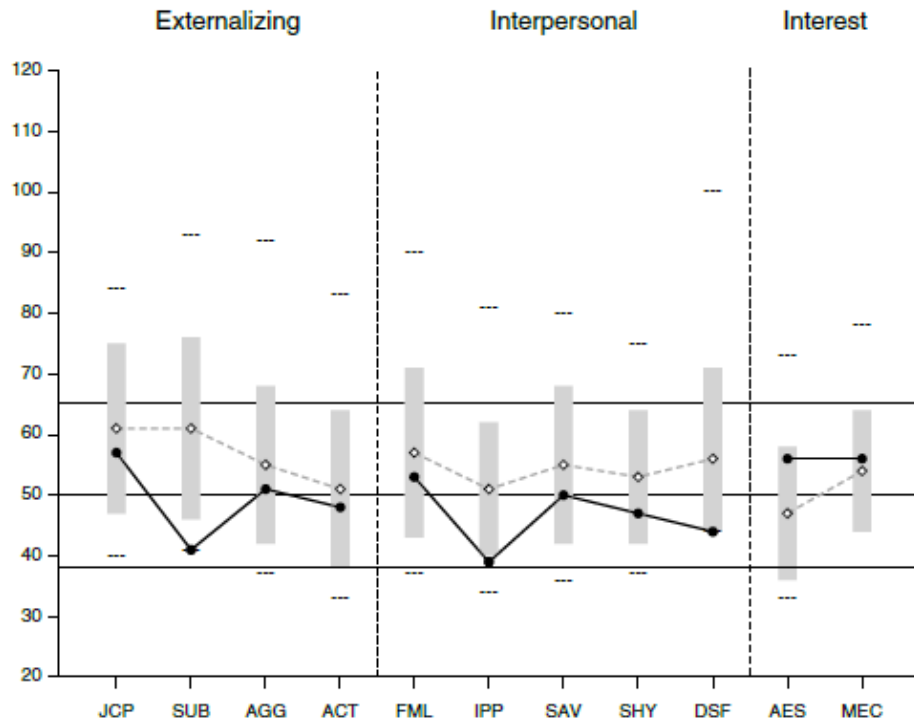
Comparison Group Data: Psychiatric Inpatient, Community Hospital (Men), N = 659

Mean Score (◇---◇):	62	58	54	60	60	74	58	60	57	58	61	53	53	47
Standard Dev (±1 SD):	14	15	12	14	16	25	16	13	13	13	17	12	12	9
Percent scoring at or below test taker:	45	53	37	87	56	33	51	37	35	46	90	42	94	81

The highest and lowest T scores possible on each scale are indicated by a "---"; MMPI-2-RF T scores are non-gendered.

MLS	Malaise	SUI	Suicidal/Death Ideation	AXY	Anxiety
GIC	Gastrointestinal Complaints	HLP	Helplessness/Hopelessness	ANP	Anger Proneness
HPC	Head Pain Complaints	SFD	Self-Doubt	BRF	Behavior-Restricting Fears
NUC	Neurological Complaints	NFC	Inefficacy	MSF	Multiple Specific Fears
COG	Cognitive Complaints	STW	Stress/Worry		

MMPI-2-RF Externalizing, Interpersonal, and Interest Scales



Raw Score:	2	0	2	3	3	1	3	2	0	4	4
T Score:	57	41	51	48	53	39	50	47	44	56	56
Response %:	100	100	100	100	100	100	100	100	100	100	100

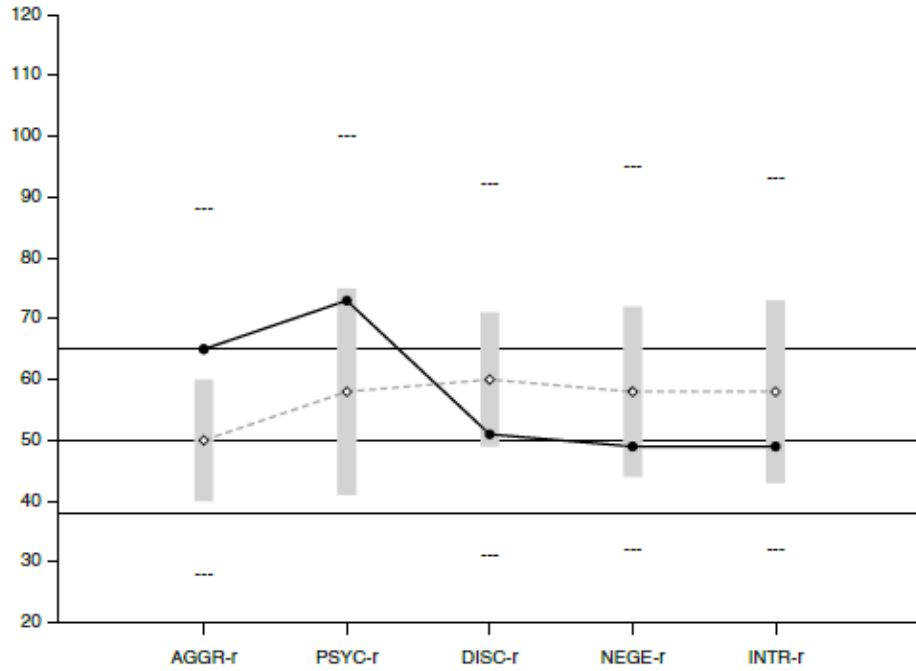
Comparison Group Data: Psychiatric Inpatient, Community Hospital (Men), N = 659

Mean Score (◊---◊):	61	61	55	51	57	51	55	53	56	47	54
Standard Dev (±1SD):	14	15	13	13	14	11	13	11	15	11	10
Percent scoring at or below test taker:	48	20	53	58	52	17	48	39	50	83	63

The highest and lowest T scores possible on each scale are indicated by a "---"; MMPI-2-RF T scores are non-gendered.

JCP	Juvenile Conduct Problems	FML	Family Problems	AES	Aesthetic-Literary Interests
SUB	Substance Abuse	IPP	Interpersonal Passivity	MEC	Mechanical-Physical Interests
AGG	Aggression	SAV	Social Avoidance		
ACT	Activation	SHY	Shyness		
		DSF	Disaffiliativeness		

MMPI-2-RF PSY-5 Scales



Raw Score:	13	8	7	6	6
T Score:	65	73	51	49	49
Response %:	100	100	100	100	100

Comparison Group Data: Psychiatric Inpatient, Community Hospital (Men), N = 659

Mean Score (◊---◊):	50	58	60	58	58
Standard Dev (±1 SD):	10	17	11	14	15
Percent scoring at or below test taker:	92	84	30	33	39

The highest and lowest T scores possible on each scale are indicated by a "---"; MMPI-2-RF T scores are non-gendered.

AGGR-r	Aggressiveness-Revised
PSYC-r	Psychoticism-Revised
DISC-r	Disconstraint-Revised
NEGE-r	Negative Emotionality/Neuroticism-Revised
INTR-r	Introversion/Low Positive Emotionality-Revised

MMPI-2-RF T SCORES (BY DOMAIN)

PROTOCOL VALIDITY

Content Non-Responsiveness	<u>2</u>	<u>53</u>	<u>57 F</u>			
	CNS	VRIN-r	TRIN-r			
Over-Reporting	<u>83</u>	<u>59</u>		<u>58</u>	<u>61</u>	<u>59</u>
	F-r	Fp-r		Fs	FBS-r	RBS
Under-Reporting	<u>66</u>	<u>52</u>				
	L-r	K-r				

SUBSTANTIVE SCALES

Somatic/Cognitive Dysfunction	<u>68</u>	<u>57</u>	<u>46</u>	<u>42</u>	<u>75</u>	<u>58</u>
	RC1	MLS	GIC	HPC	NUC	COG
Emotional Dysfunction	<u>52</u>	<u>55</u>	<u>45</u>	<u>52</u>	<u>52</u>	<u>48</u>
	EID	RCd	SUI	HLP	SFD	NFC
		<u>50</u>	<u>49</u>			
		RC2	INTR-r			
		<u>53</u>	<u>52</u>	<u>80</u>	<u>47</u>	<u>71</u>
		RC7	STW	AXY	ANP	BRF
						<u>51*</u>
						<u>49</u>
						MSF
						NEGE-r
Thought Dysfunction	<u>74</u>	<u>80</u>				
	THD	RC6				
		<u>70</u>				
		RC8				
		<u>73</u>				
		PSYC-r				
Behavioral Dysfunction	<u>55</u>	<u>52</u>	<u>57</u>	<u>41</u>		
	BXD	RC4	JCP	SUB		
		<u>53</u>	<u>51</u>	<u>48</u>	<u>65</u>	<u>51</u>
		RC9	AGG	ACT	AGGR-r	DISC-r
Interpersonal Functioning	<u>53</u>	<u>65</u>	<u>39</u>	<u>50</u>	<u>47</u>	<u>44</u>
		FML	RC3	IPP	SAV	SHY
						DSF
Interests	<u>56</u>	<u>56</u>				
		AES	MEC			

*The test taker provided scorable responses to less than 90% of the items scored on this scale. See the relevant profile page for the specific percentage.

Note. This information is provided to facilitate interpretation following the recommended structure for MMPI-2-RF interpretation in Chapter 5 of the *MMPI-2-RF Manual for Administration, Scoring, and Interpretation*, which provides details in the text and an outline in Table 5-1.

ITEM-LEVEL INFORMATION

Unscorable Responses

Following is a list of items to which the test taker did not provide scorable responses. Unanswered or double answered (both True and False) items are unscorable. The scales on which the items appear are in parentheses following the item content.

172.

184.

Critical Responses

Seven MMPI-2-RF scales--Suicidal/Death Ideation (SUI), Helplessness/Hopelessness (HLP), Anxiety (AXY), Ideas of Persecution (RC6), Aberrant Experiences (RC8), Substance Abuse (SUB), and Aggression (AGG)--have been designated by the test authors as having critical item content that may require immediate attention and follow-up. Items answered by the individual in the keyed direction (True or False) on a critical scale are listed below if his T score on that scale is 65 or higher. The percentage of the MMPI-2-RF normative sample (NS) and of the Psychiatric Inpatient, Community Hospital (Men) comparison group (CG) that answered each item in the keyed direction are provided in parentheses following the item content.

Anxiety (AXY, T Score = 80)

79.

275.

289.

Ideas of Persecution (RC6, T Score = 80)

150.

194.

212.

233.

264.

310.

Aberrant Experiences (RC8, T Score = 70)

32.

85.

179.

199.

216.

240.

330.



Special Note:

The content of the test items is included in the actual reports. To protect the integrity of the test, the item content does not appear in this sample report.

Ms. L: An Abusive Relationship Ends

- 20 year old, single, female college student
- Presented at college counseling center complaining of academic difficulties following breakup
- Reported involvement in an abusive relationship for over a year
- Frequent arguments culminated in physical altercations
- Often triggered by Ms. L's suspicions regarding boyfriend's infidelity
- Altercations would often leave both with bruises
- Typically occurred when both were intoxicated
- Boyfriend terminated relationships three weeks prior to intake

Ms. L: An Abusive Relationship Ends

- Ms. L went on a two-week drinking binge following breakup
- Had sexual relationships with several men she met at bars while using forged identification
- Stopped attending classes and missed several exams
- After friend threatened to inform her parents about activities, she stopped going to bars and started attending classes
- When she explained her absence to one of her professors, she recommended that Ms. L seek assistance at the counseling clinic



Minnesota Multiphasic
Personality Inventory-2
Restructured Form®

Score Report

MMPI-2-RF®

Minnesota Multiphasic Personality Inventory-2-Restructured Form®

Yossef S. Ben-Porath, PhD, & Auke Tellegen, PhD

ID Number:	Fig903
Age:	20
Gender:	Female
Marital Status:	Never Married
Years of Education:	15
Date Assessed:	04/22/2011



Copyright © 2008, 2011, 2012 by the Regents of the University of Minnesota. All rights reserved.
Distributed exclusively under license from the University of Minnesota by NCS Pearson, Inc. Portions reproduced from the MMPI-2-RF test booklet. Copyright © 2008 by the Regents of the University of Minnesota. All rights reserved. Portions excerpted from the *MMPI-2-RF Manual for Administration, Scoring, and Interpretation*. Copyright © 2008, 2011 by the Regents of the University of Minnesota. All rights reserved. Used by permission of the University of Minnesota Press.

MMPI-2-RF, the **MMPI-2-RF logo**, and **Minnesota Multiphasic Personality Inventory-2-Restructured Form** are registered trademarks of the University of Minnesota. **Pearson**, the **PSI logo**, and **PsychCorp** are trademarks in the U.S. and/or other countries of Pearson Education, Inc., or its affiliate(s).

TRADE SECRET INFORMATION

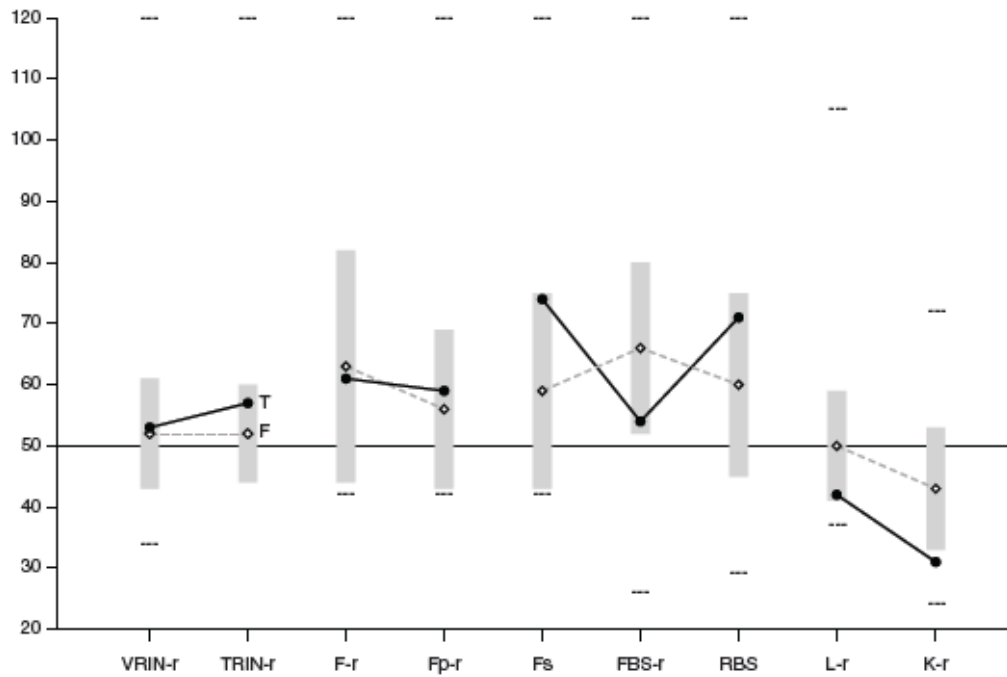
Not for release under HIPAA or other data disclosure laws that exempt trade secrets from disclosure.

[3.0 / 1 / 3.1.13]

ALWAYS LEARNING

PEARSON

MMPI-2-RF Validity Scales



Raw Score:	4	12	4	2	4	9	10	1	2
T Score:	53	57	61	59	74	54	71	42	31
Response %:	100	96	100	100	100	100	100	100	100
Cannot Say (Raw):	3								
									48%

Comparison Group Data: College Counseling Clinic (Women), N = 894

Mean Score (◊--◊):	52	52	63	56	59	66	60	50	43
Standard Dev (±1SD):	9	8	19	13	16	14	15	9	10
Percent scoring at or below test taker:	67	84	61	76	88	27	82	31	15

The highest and lowest T scores possible on each scale are indicated by a "---"; MMPI-2-RF T scores are non-gendered.

VRIN-r	Variable Response Inconsistency	Fs	Infrequent Somatic Responses	L-r	Uncommon Virtues
TRIN-r	True Response Inconsistency	FBS-r	Symptom Validity	K-r	Adjustment Validity
F-r	Infrequent Responses	RBS	Response Bias Scale		
Fp-r	Infrequent Psychopathology Responses				

MMPI-2-RF Higher-Order (H-O) and Restructured Clinical (RC) Scales



Raw Score:	13	4	12	12	7	1	7	13	4	13	6	19
T Score:	54	60	65	64	61	38	51	73	70	65	66	66
Response %:	98	96	100	100	100	100	93	100	100	100	94	100

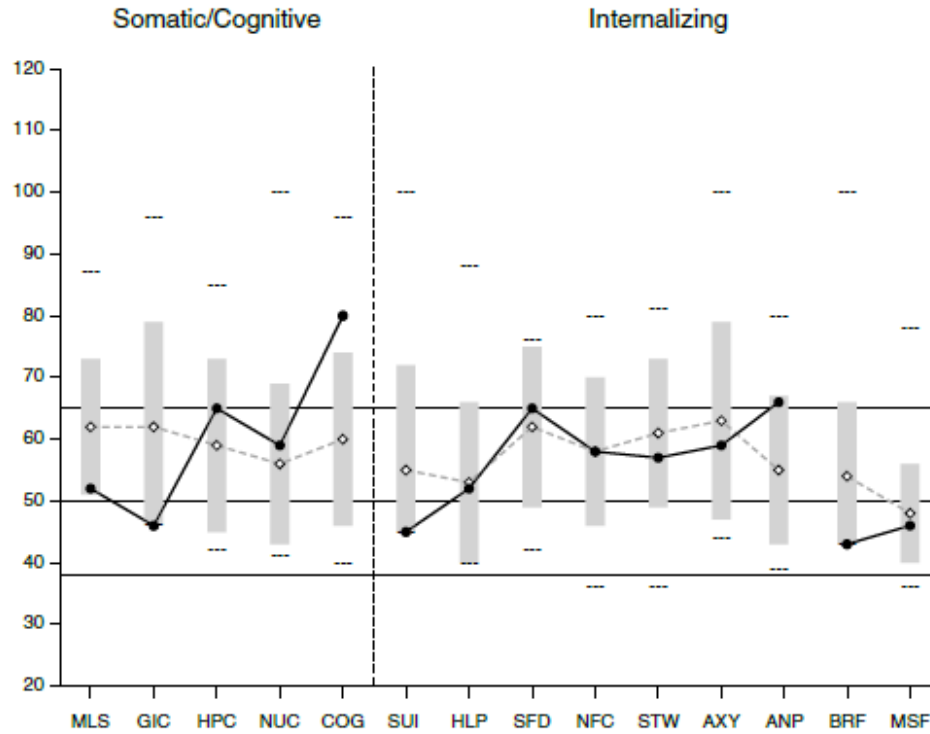
Comparison Group Data: College Counseling Clinic (Women), N = 894

Mean Score (◊---◊):	64	52	49	66	60	61	52	53	55	58	53	48
Standard Dev (±1SD):	13	11	9	13	13	14	11	10	12	12	12	9
Percent scoring at or below test taker:	27	84	96	45	59	5	61	97	92	74	89	96

The highest and lowest T scores possible on each scale are indicated by a "---"; MMPI-2-RF T scores are non-gendered.

EID	Emotional/Internalizing Dysfunction	RCd	Demoralization	RC6	Ideas of Persecution
THD	Thought Dysfunction	RC1	Somatic Complaints	RC7	Dysfunctional Negative Emotions
BXD	Behavioral/Externalizing Dysfunction	RC2	Low Positive Emotions	RC8	Aberrant Experiences
		RC3	Cynicism	RC9	Hypomanic Activation
		RC4	Antisocial Behavior		

MMPI-2-RF Somatic/Cognitive and Internalizing Scales



Raw Score:	2	0	3	2	7	0	1	3	5	4	1	5	0	2
T Score:	52	46	65	59	80	45	52	65	58	57	59	66	43	46
Response %:	100	100	100	100	100	100	100	100	100	86	100	100	100	100

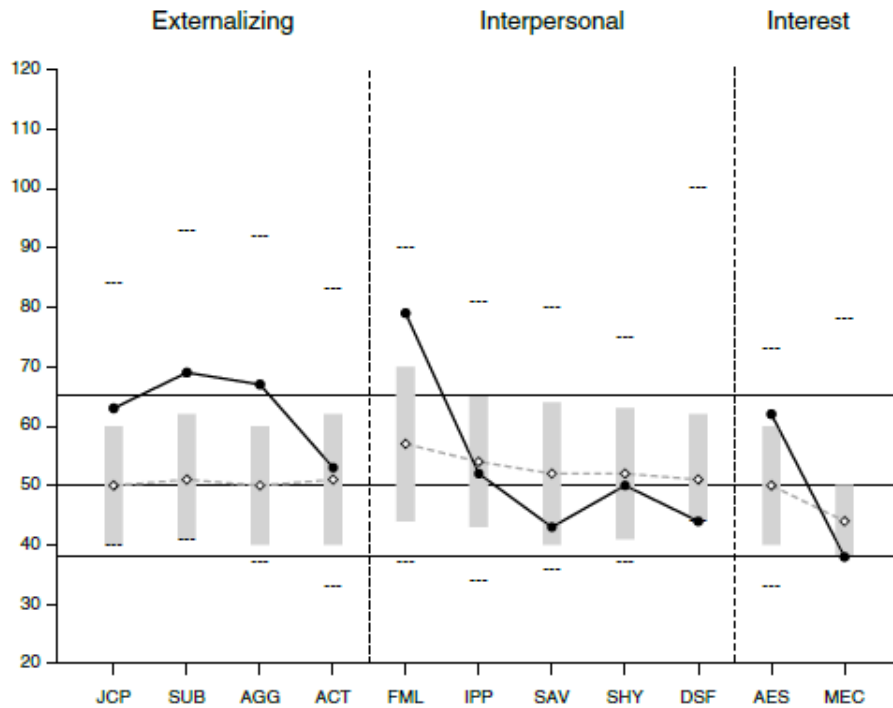
Comparison Group Data: College Counseling Clinic (Women), N = 894

Mean Score (◇---◇):	62	62	59	56	60	55	53	62	58	61	63	55	54	48
Standard Dev (±1 SD):	11	17	14	13	14	17	13	13	12	12	16	12	12	8
Percent scoring at or below test taker:	28	45	73	72	93	70	63	62	62	52	57	85	45	45

The highest and lowest T scores possible on each scale are indicated by a "---"; MMPI-2-RF T scores are non-gendered.

MLS	Malaise	SUI	Suicidal/Death Ideation	AXY	Anxiety
GIC	Gastrointestinal Complaints	HLP	Helplessness/Hopelessness	ANP	Anger Proneness
HPC	Head Pain Complaints	SFD	Self-Doubt	BRF	Behavior-Restricting Fears
NUC	Neurological Complaints	NFC	Inefficacy	MSF	Multiple Specific Fears
COG	Cognitive Complaints	STW	Stress/Worry		

MMPI-2-RF Externalizing, Interpersonal, and Interest Scales



Raw Score:	3	4	5	4	8	5	1	3	0	5	0
T Score:	63	69	67	53	79	52	43	50	44	62	38
Response %:	100	100	100	100	100	100	100	100	100	100	100

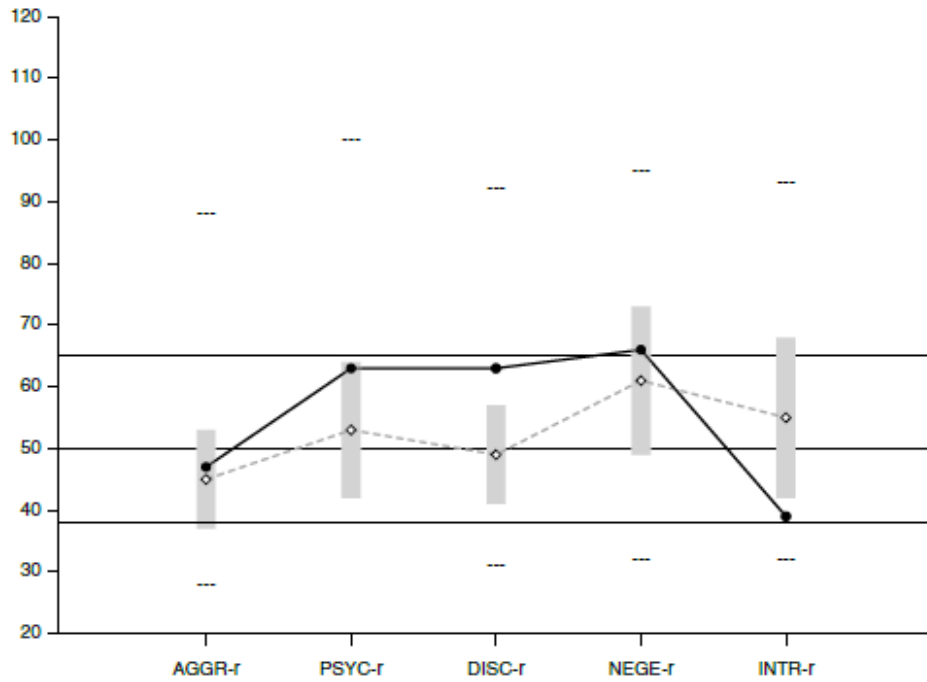
Comparison Group Data: College Counseling Clinic (Women), N = 894

Mean Score (◊---◊):	50	51	50	51	57	54	52	52	51	50	44
Standard Dev ($\pm 1SD$):	10	11	10	11	13	11	12	11	11	10	6
Percent scoring at or below test taker:	93	96	97	71	95	62	32	52	64	91	35

The highest and lowest T scores possible on each scale are indicated by a "---"; MMPI-2-RF T scores are non-gendered.

JCP	Juvenile Conduct Problems	FML	Family Problems	AES	Aesthetic-Literary Interests
SUB	Substance Abuse	IPP	Interpersonal Passivity	MEC	Mechanical-Physical Interests
AGG	Aggression	SAV	Social Avoidance		
ACT	Activation	SHY	Shyness		
		DSF	Disaffiliativeness		

MMPI-2-RF PSY-5 Scales



Raw Score:	8	5	11	12	2
T Score:	47	63	63	66	39
Response %:	100	96	100	95	100

Comparison Group Data: College Counseling Clinic (Women), N = 894

Mean Score (◊---◊):	45	53	49	61	55
Standard Dev (±1 SD):	8	11	8	12	13
Percent scoring at or below test taker:	71	88	96	69	10

The highest and lowest T scores possible on each scale are indicated by a "---"; MMPI-2-RF T scores are non-gendered.

AGGR-r	Aggressiveness-Revised
PSYC-r	Psychoticism-Revised
DISC-r	Disconstraint-Revised
NEGE-r	Negative Emotionality/Neuroticism-Revised
INTR-r	Introversion/Low Positive Emotionality-Revised

MMPI-2-RF T SCORES (BY DOMAIN)

PROTOCOL VALIDITY

Content Non-Responsiveness	<u>3</u> CNS	<u>53</u> VRIN-r	<u>57 T</u> TRIN-r			
Over-Reporting	<u>61</u> F-r	<u>59</u> Fp-r		<u>74</u> Fs	<u>54</u> FBS-r	<u>71</u> RBS
Under-Reporting	<u>42</u> L-r	<u>31</u> K-r				

SUBSTANTIVE SCALES

Somatic/Cognitive Dysfunction	<u>61</u> RC1	<u>52</u> MLS	<u>46</u> GIC	<u>65</u> HPC	<u>59</u> NUC	<u>80</u> COG
Emotional Dysfunction	<u>54</u> EID	<u>64</u> RCd	<u>45</u> SUI	<u>52</u> HLP	<u>65</u> SFD	<u>58</u> NFC
		<u>38</u> RC2	<u>39</u> INTR-r			
		<u>65</u> RC7	<u>57*</u> STW	<u>59</u> AXY	<u>66</u> ANP	<u>43</u> BRF
Thought Dysfunction	<u>60</u> THD	<u>70</u> RC6				
		<u>66</u> RC8				
		<u>63</u> PSYC-r				
Behavioral Dysfunction	<u>65</u> BXD	<u>73</u> RC4	<u>63</u> JCP	<u>69</u> SUB		
		<u>66</u> RC9	<u>67</u> AGG	<u>53</u> ACT	<u>47</u> AGGR-r	<u>63</u> DISC-r
Interpersonal Functioning	<u>79</u> FML	<u>51</u> RC3	<u>52</u> IPP	<u>43</u> SAV	<u>50</u> SHY	<u>44</u> DSF
Interests	<u>62</u> AES	<u>38</u> MEC				

*The test taker provided scorable responses to less than 90% of the items scored on this scale. See the relevant profile page for the specific percentage.

Note. This information is provided to facilitate interpretation following the recommended structure for MMPI-2-RF interpretation in Chapter 5 of the *MMPI-2-RF Manual for Administration, Scoring, and Interpretation*, which provides details in the text and an outline in Table 5-1.

ITEM-LEVEL INFORMATION

Unscorable Responses

Following is a list of items to which the test taker did not provide scorable responses. Unanswered or double answered (both True and False) items are unscorable. The scales on which the items appear are in parentheses following the item content.

73.
85.
238.

Critical Responses

Seven MMPI-2-RF scales--Suicidal/Death Ideation (SUI), Helplessness/Hopelessness (HLP), Anxiety (AXY), Ideas of Persecution (RC6), Aberrant Experiences (RC8), Substance Abuse (SUB), and Aggression (AGG)--have been designated by the test authors as having critical item content that may require immediate attention and follow-up. Items answered by the individual in the keyed direction (True or False) on a critical scale are listed below if her T score on that scale is 65 or higher. The percentage of the MMPI-2-RF normative sample (NS) and of the College Counseling Clinic (Women) comparison group (CG) that answered each item in the keyed direction are provided in parentheses following the item content.

Ideas of Persecution (RC6, T Score = 70)

194.
212.
233.
287.

Aberrant Experiences (RC8, T Score = 66)

32.
106.

159.

179.

199.
257.

Substance Abuse (SUB, T Score = 69)

49.
141.
237.
297.



Special Note:
The content of the test items is included in the actual reports. To protect the integrity of the test, the item content does not appear in this sample report.

Aggression (AGG, T Score = 67)

23.

26.

84.

316.

337.



Special Note:
The content of the test items
is included in the actual reports.
To protect the integrity of the test,
the item content does not appear
in this sample report.

End of Report

This and previous pages of this report contain trade secrets and are not to be released in response to requests under HIPAA (or any other data disclosure law that exempts trade secret information from release). Further, release in response to litigation discovery demands should be made only in accordance with your profession's ethical guidelines and under an appropriate protective order.

Mr. E: Substance-Induced Psychotic Symptoms

- 28 year old, single male
- Admitted to inpatient psychiatric unit of community hospital after presenting with suspected psychotic symptoms
- Extensive history of alcohol and drug abuse and unsuccessful treatments
- Assault led to arrest and current evaluation
- At intake described as still intoxicated following recent cocaine binge
- Thinking characterized as paranoid and suspicious, with religious preoccupation and obsessive rumination

Mr. E: Substance-Induced Psychotic Symptoms

- No prior involvement with mental health system, but several failed substance abuse treatment programs
- Recent breakup
- Arrest followed altercation at a bar
- Caused serious injuries to stranger who had asked him to lower his voice
- Arresting officer noted Mr. P's religious preoccupation
- Taken to crisis stabilization unit where staff diagnosed intoxication following crack cocaine binge
- Possibly independent psychotic symptoms noted, with recommendation for inpatient observation



Minnesota Multiphasic
Personality Inventory-2
Restructured Form®

Score Report

MMPI-2-RF®

Minnesota Multiphasic Personality Inventory-2-Restructured Form®

Yossef S. Ben-Porath, PhD, & Auke Tellegen, PhD

ID Number:	Fig904
Age:	28
Gender:	Male
Marital Status:	Not reported
Years of Education:	Not reported
Date Assessed:	04/22/2011



Copyright © 2008, 2011, 2012 by the Regents of the University of Minnesota. All rights reserved.
Distributed exclusively under license from the University of Minnesota by NCS Pearson, Inc. Portions reproduced from the MMPI-2-RF test booklet. Copyright © 2008 by the Regents of the University of Minnesota. All rights reserved. Portions excerpted from the *MMPI-2-RF Manual for Administration, Scoring, and Interpretation*. Copyright © 2008, 2011 by the Regents of the University of Minnesota. All rights reserved. Used by permission of the University of Minnesota Press.

MMPI-2-RF, the **MMPI-2-RF logo**, and **Minnesota Multiphasic Personality Inventory-2-Restructured Form** are registered trademarks of the University of Minnesota. **Pearson**, the **PSI logo**, and **PsychCorp** are trademarks in the U.S. and/or other countries of Pearson Education, Inc., or its affiliate(s).

TRADE SECRET INFORMATION

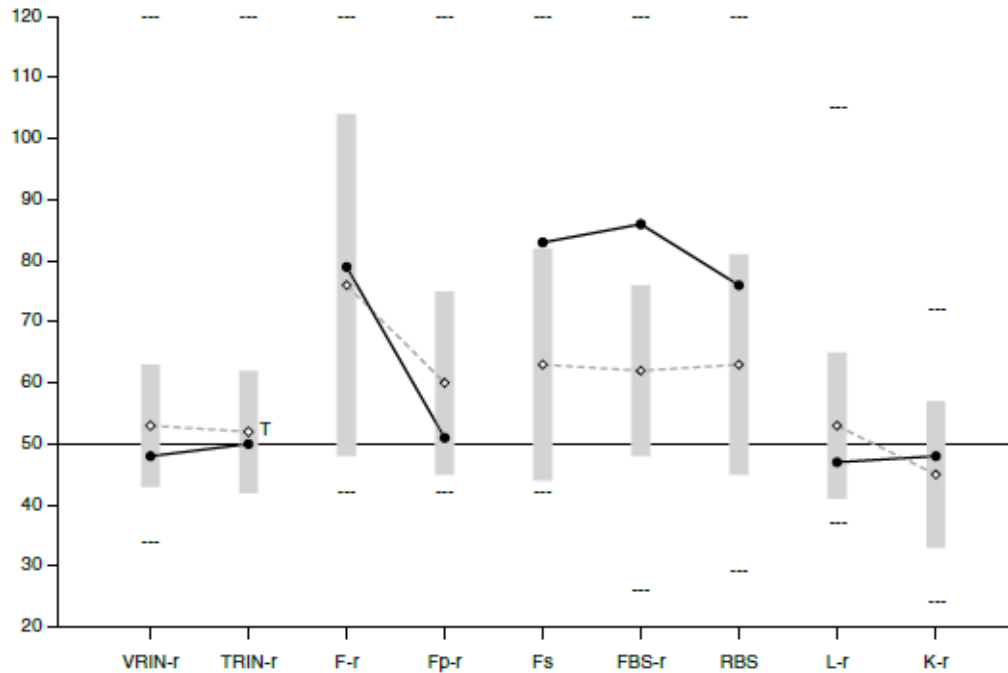
Not for release under HIPAA or other data disclosure laws that exempt trade secrets from disclosure.

[3.0 / 1 / 3.1.13]

ALWAYS LEARNING

PEARSON

MMPI-2-RF Validity Scales



Raw Score:	3	11	8	1	5	19	11	2	7
T Score:	48	50	79	51	83	86	76	47	48
Response %:	100	100	100	100	100	100	100	100	100
Cannot Say (Raw):	0								
									Percent True (of items answered): 47%

Comparison Group Data: Psychiatric Inpatient, Community Hospital (Men), N = 659

Mean Score (◊---◊):	53	52 T	76	60	63	62	63	53	45
Standard Dev (±SD):	10	10	28	15	19	14	18	12	12
Percent scoring at or below test taker:	45	34	62	47	88	96	79	45	67

The highest and lowest T scores possible on each scale are indicated by a "---"; MMPI-2-RF T scores are non-gendered.

VRIN-r	Variable Response Inconsistency	Fs	Infrequent Somatic Responses	L-r	Uncommon Virtues
TRIN-r	True Response Inconsistency	FBS-r	Symptom Validity	K-r	Adjustment Validity
F-r	Infrequent Responses	RBS	Response Bias Scale		
Fp-r	Infrequent Psychopathology Responses				

MMPI-2-RF Higher-Order (H-O) and Restructured Clinical (RC) Scales



Raw Score:	27	3	14	19	6	6	1	15	2	13	5	14
T Score:	73	57	70	77	59	58	38	79	61	65	63	53
Response %:	100	100	100	100	100	100	100	100	100	100	100	100

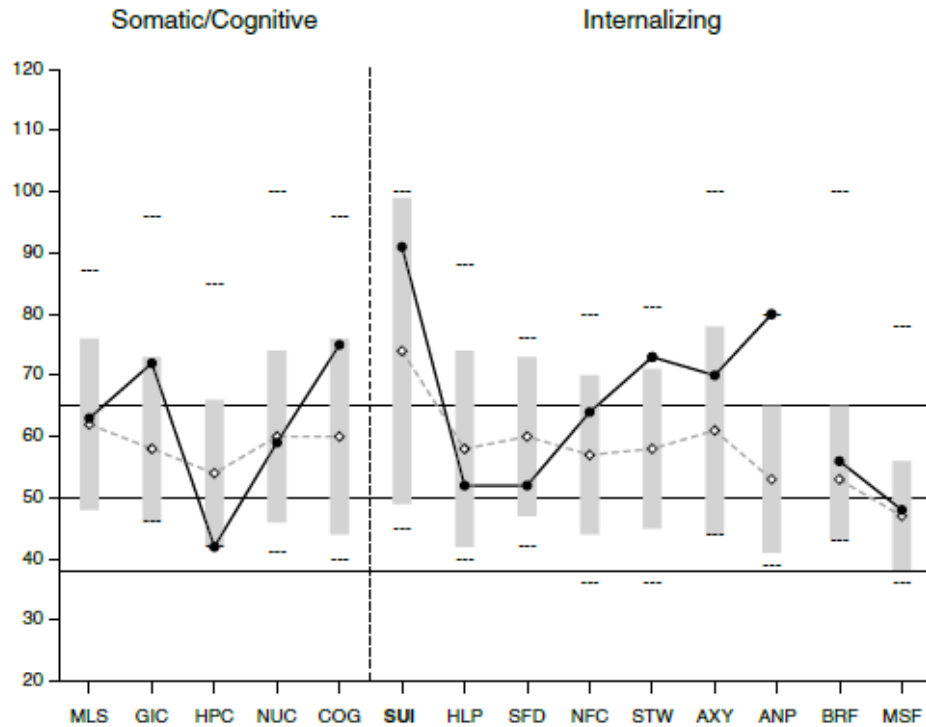
Comparison Group Data: Psychiatric Inpatient, Community Hospital (Men), N = 659

Mean Score (◊---◊):	63	59	60	64	58	63	52	64	63	56	58	52
Standard Dev (±1 SD):	16	17	12	15	14	17	12	13	17	14	15	12
Percent scoring at or below test taker:	68	59	81	74	58	45	12	88	56	75	71	64

The highest and lowest T scores possible on each scale are indicated by a "---"; MMPI-2-RF T scores are non-gendered.

EID	Emotional/Internalizing Dysfunction	RCd	Demoralization	RC6	Ideas of Persecution
THD	Thought Dysfunction	RC1	Somatic Complaints	RC7	Dysfunctional Negative Emotions
BXD	Behavioral/Externalizing Dysfunction	RC2	Low Positive Emotions	RC8	Aberrant Experiences
		RC3	Cynicism	RC9	Hypomanic Activation
		RC4	Antisocial Behavior		

MMPI-2-RF Somatic/Cognitive and Internalizing Scales



Raw Score:	4	2	0	2	6	3	1	1	6	6	2	7	1	3
T Score:	63	72	42	59	75	91	52	52	64	73	70	80	56	48
Response %:	100	100	100	100	100	100	100	100	100	100	100	100	100	100

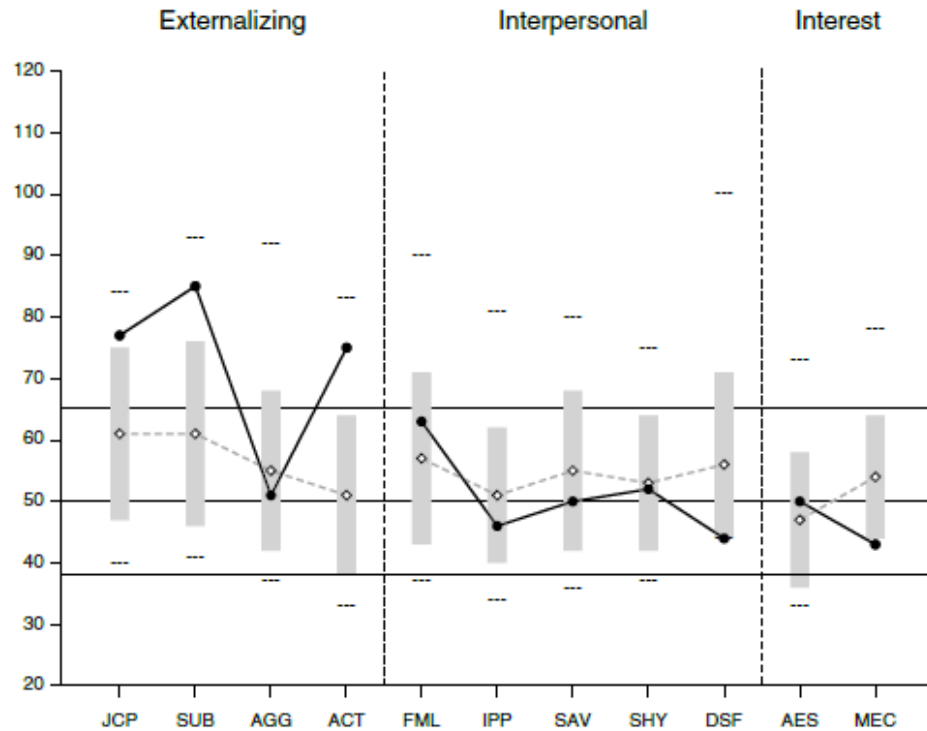
Comparison Group Data: Psychiatric Inpatient, Community Hospital (Men), N = 659

Mean Score (◊---◊):	62	58	54	60	60	74	58	60	57	58	61	53	53	47
Standard Dev (+1 SD):	14	15	12	14	16	25	16	13	13	13	17	12	12	9
Percent scoring at or below test taker:	59	86	37	58	82	78	51	37	71	94	78	100	76	69

The highest and lowest T scores possible on each scale are indicated by a "---"; MMPI-2-RF T scores are non-gendered.

MLS	Malaise	SUI	Suicidal/Death Ideation	AXY	Anxiety
GIC	Gastrointestinal Complaints	HLP	Helplessness/Hopelessness	ANP	Anger Proneness
HPC	Head Pain Complaints	SFD	Self-Doubt	BRF	Behavior-Restricting Fears
NUC	Neurological Complaints	NFC	Inefficacy	MSF	Multiple Specific Fears
COG	Cognitive Complaints	STW	Stress/Worry		

MMPI-2-RF Externalizing, Interpersonal, and Interest Scales



Raw Score:	5	6	2	7	5	3	3	4	0	3	1
T Score:	77	85	51	75	63	46	50	52	44	50	43
Response %:	100	100	100	100	100	100	100	100	100	100	100

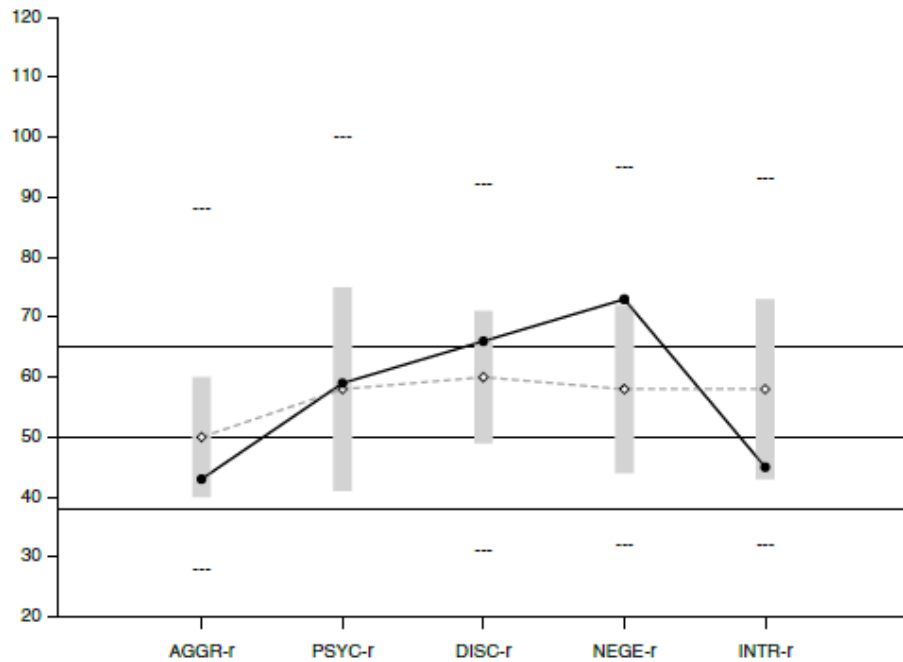
Comparison Group Data: Psychiatric Inpatient, Community Hospital (Men), N = 659

Mean Score (◊--◊):	61	61	55	51	57	51	55	53	56	47	54
Standard Dev (±1SD):	14	15	13	13	14	11	13	11	15	11	10
Percent scoring at or below test taker:	90	96	53	97	72	46	48	61	50	72	19

The highest and lowest T scores possible on each scale are indicated by a "---"; MMPI-2-RF T scores are non-gendered.

JCP	Juvenile Conduct Problems	FML	Family Problems	AES	Aesthetic-Literary Interests
SUB	Substance Abuse	IPP	Interpersonal Passivity	MEC	Mechanical-Physical Interests
AGG	Aggression	SAV	Social Avoidance		
ACT	Activation	SHY	Shyness		
		DSF	Disaffiliativeness		

MMPI-2-RF PSY-5 Scales



Raw Score:	6	4	12	14	4
T Score:	43	59	66	73	45
Response %:	100	100	100	100	100

Comparison Group Data: Psychiatric Inpatient, Community Hospital (Men), N = 659

Mean Score (◊---◊):	50	58	60	58	58
Standard Dev (±1SD):	10	17	11	14	15
Percent scoring at or below test taker:	30	64	75	85	24

The highest and lowest T scores possible on each scale are indicated by a "---"; MMPI-2-RF T scores are non-gendered.

AGGR-r Aggressiveness-Revised
 PSYC-r Psychoticism-Revised
 DISC-r Disconstraint-Revised
 NEGE-r Negative Emotionality/Neuroticism-Revised
 INTR-r Introversion/Low Positive Emotionality-Revised

MMPI-2-RF T SCORES (BY DOMAIN)

PROTOCOL VALIDITY

Content Non-Responsiveness	<u>0</u>	<u>48</u>	<u>50</u>			
	CNS	VRIN-r	TRIN-r			
Over-Reporting	<u>79</u>	<u>51</u>		<u>83</u>	<u>86</u>	<u>76</u>
	F-r	Fp-r		Fs	FBS-r	RBS
Under-Reporting	<u>47</u>	<u>48</u>				
	L-r	K-r				

SUBSTANTIVE SCALES

Somatic/Cognitive Dysfunction		<u>59</u>	<u>63</u>	<u>72</u>	<u>42</u>	<u>59</u>	<u>75</u>
		RC1	MLS	GIC	HPC	NUC	COG
Emotional Dysfunction	<u>73</u>	<u>77</u>	<u>91</u>	<u>52</u>	<u>52</u>	<u>64</u>	
	EID	RCd	SUI	HLP	SFD	NFC	
		<u>58</u>	<u>45</u>				
		RC2	INTR-r				
		<u>65</u>	<u>73</u>	<u>70</u>	<u>80</u>	<u>56</u>	<u>48</u>
		RC7	STW	AXY	ANP	BRF	MSF
							<u>73</u>
							NEGE-r
Thought Dysfunction	<u>57</u>	<u>61</u>					
	THD	RC6					
		<u>63</u>					
		RC8					
		<u>59</u>					
		PSYC-r					
Behavioral Dysfunction	<u>70</u>	<u>79</u>	<u>77</u>	<u>85</u>			
	BXD	RC4	JCP	SUB			
		<u>53</u>	<u>51</u>	<u>75</u>	<u>43</u>	<u>66</u>	
		RC9	AGG	ACT	AGGR-r	DISC-r	
Interpersonal Functioning		<u>63</u>	<u>38</u>	<u>46</u>	<u>50</u>	<u>52</u>	<u>44</u>
		FML	RC3	IPP	SAV	SHY	DSF
Interests		<u>50</u>	<u>43</u>				
		AES	MEC				

Note. This information is provided to facilitate interpretation following the recommended structure for MMPI-2-RF interpretation in Chapter 5 of the *MMPI-2-RF Manual for Administration, Scoring, and Interpretation*, which provides details in the text and an outline in Table 5-1.

ITEM-LEVEL INFORMATION

Unscorable Responses

The test taker produced scorable responses to all the MMPI-2-RF items.

Critical Responses

Seven MMPI-2-RF scales--Suicidal/Death Ideation (SUI), Helplessness/Hopelessness (HLP), Anxiety (AXY), Ideas of Persecution (RC6), Aberrant Experiences (RC8), Substance Abuse (SUB), and Aggression (AGG)--have been designated by the test authors as having critical item content that may require immediate attention and follow-up. Items answered by the individual in the keyed direction (True or False) on a critical scale are listed below if his T score on that scale is 65 or higher. The percentage of the MMPI-2-RF normative sample (NS) and of the Psychiatric Inpatient, Community Hospital (Men) comparison group (CG) that answered each item in the keyed direction are provided in parentheses following the item content.

Suicidal/Death Ideation (SUI, T Score = 91)

93.
164.
334.

Anxiety (AXY, T Score = 70)

228.
289.

Substance Abuse (SUB, T Score = 85)

49.
141.
192.
237.
266.
297.



Special Note:

The content of the test items is included in the actual reports. To protect the integrity of the test, the item content does not appear in this sample report.

End of Report

This and previous pages of this report contain trade secrets and are not to be released in response to requests under HIPAA (or any other data disclosure law that exempts trade secret information from release). Further, release in response to litigation discovery demands should be made only in accordance with your profession's ethical guidelines and under an appropriate protective order.

For additional information on this chapter, please reference:

Ben-Porath, Y.S. (2012). *Interpreting the MMPI-2-RF*. Minneapolis: University of Minnesota Press.